





SOIL MAP UNIT	SOIL MAP UNIT NAME
68	SUTTON, COOL
35	CHAMPLAIN
500	UDORTHENTS, DISTURBED MAP UNIT

**SLOPE PHASES**

ALPHA SLOPE SYMBOL	RANGE	LOWER LIMIT	UPPER LIMIT
A	0-3 %	-	-
B	3-8 %	-	-
C	8-15 %	4 - 8 %	8 - 16 %
D	15-25 %	10 - 16 %	18 - 35 %
E	25-50 %	20 - 35 %	35 - 60 %
F	50 % +	-	-

**STONY & BOULDERY PHASES**

STONY CLASS PHASE	PERCENT SURFACE COVER	DISTANCE BETWEEN STONES
1 NONSTONY	<0.01 %	>100' APART
2 STONY	0.01 - 1.0 %	50-100' APART
3 VERY STONY	1.0 - 3.0 %	10 - 50' APART
4 EXTREMELY STONY	3.0 - 15.0 %	1.5 - 10' APART

**MAP SYMBOL DENOMINATORS**

**FOR DISTURBED OR ALTERED SOIL MAP UNITS**

**SYMBOL 1: DRAINAGE CLASS**

- a - EXCESSIVELY DRAINED
- b - SOMEWHAT EXCESSIVELY DRAINED
- c - WELL DRAINED
- d - MODERATELY WELL DRAINED
- e - SOMEWHAT POORLY DRAINED
- f - POORLY DRAINED
- g - VERY POORLY DRAINED
- h - NOT DETERMINED

**SYMBOL 2: PARENT MATERIAL (OF NATURALLY FORMED SOIL ONLY, IF PRESENT)**

- a - NO NATURAL SOIL WITHIN 60" (OR 152 cm)
- b - GLACIOFLUVIAL DEPOSITS (OUTWASH/TERRACES OF SAND OR SAND AND GRAVEL)
- c - GLACIAL TILL MATERIAL (ACTIVE ICE)
- d - GLACIOLACUSTRINE VERY FINE SAND AND SILT DEPOSITS (GLACIAL LAKES)
- e - LOAMY/SANDY OVER SILT/CLAY DEPOSITS
- f - MARINE SILT AND CLAY DEPOSITS (OCEAN WATERS)
- g - ALLUVIAL DEPOSITS (FLOODPLAINS)
- h - ORGANIC MATERIALS-FRESH WATER WETLANDS
- i - ORGANIC MATERIALS-TIDAL WETLANDS

**SYMBOL 3: RESTRICTIVE/IMPERVIOUS LAYERS**

- a - NONE
- b - BOULDERY SURFACE WITH MORE THAN 15% OF THE SURFACE COVERED WITH BOULDERS
- c - MINERAL RESTRICTIVE LAYER(S) ARE PRESENT IN THE SOIL PROFILE LESS THAN 40 INCHES BELOW THE SOIL SURFACE SUCH AS HARD PAN, PLATY STRUCTURE OR CLAYEY TEXTURE WITH CONSISTENCE OF AT LEAST FIRM (I.E., MORE THAN 20 NEWTONS), FOR OTHER EXAMPLES OF SOIL CHARACTERISTICS THAT QUALIFY FOR RESTRICTIVE LAYERS, SEE "SOIL MANUAL FOR SITE EVALUATIONS IN NH" 2 ED., (PAGE 3-17, FIGURE 3-14)
- d - BEDROCK IN THE SOIL PROFILE; 0-20 INCHES
- e - BEDROCK IN THE SOIL PROFILE; 20-60 INCHES
- f - AREAS WHERE DEPTH TO BEDROCK IS SO VARIABLE THAT A SINGLE SOIL TYPE CANNOT BE APPLIED, WILL BE MAPPED AS A COMPLEX OF SOIL TYPES
- g - SUBJECT TO FLOODING
- h - MAN-MADE IMPERVIOUS SURFACE INCLUDING PAVEMENT, CONCRETE, OR BUILT-UP SURFACES.

(i.e., BUILDINGS) WITH NO MORPHOLOGICAL RESTRICTIVE LAYER WITHIN CONTROL SECTION

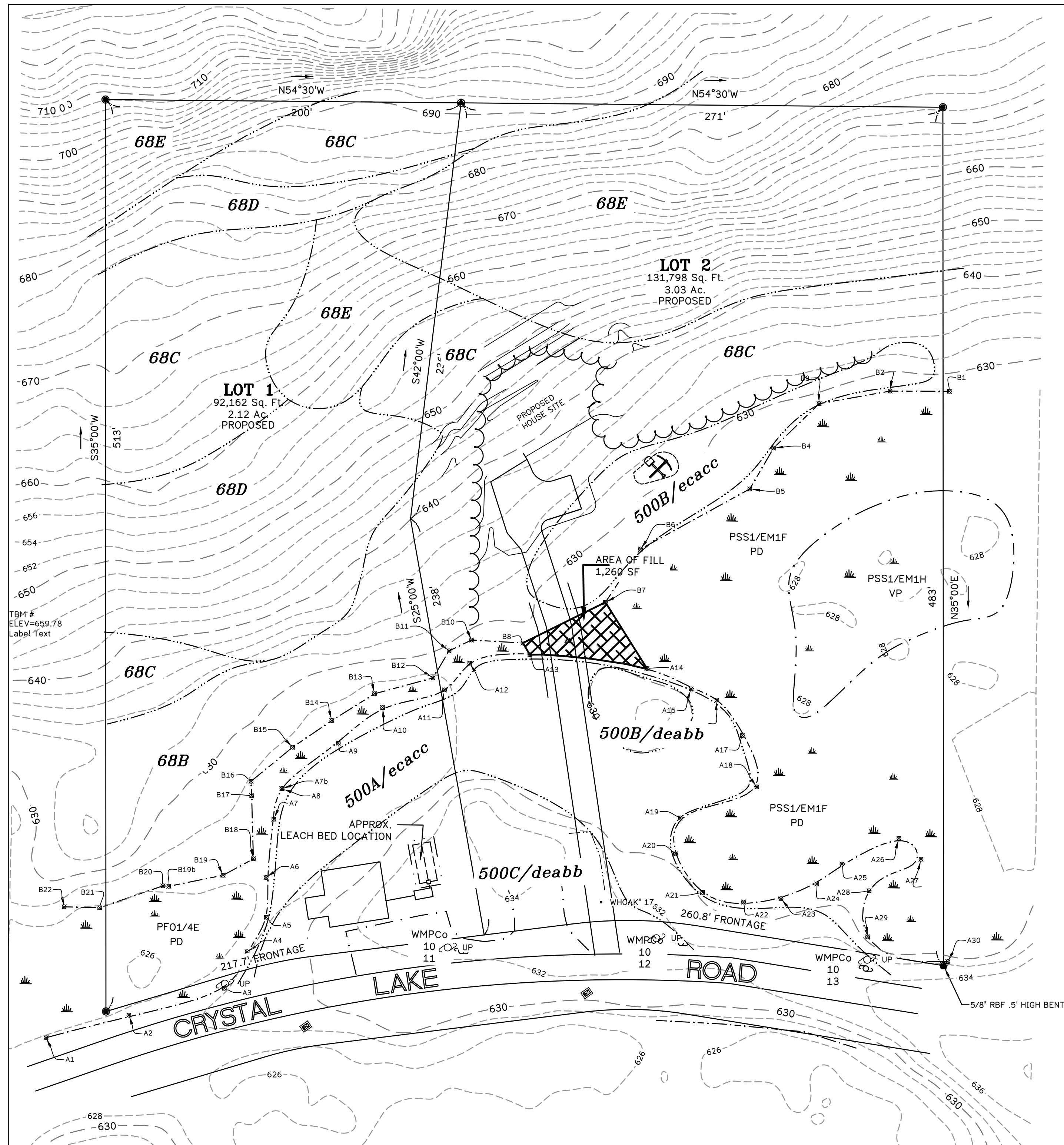
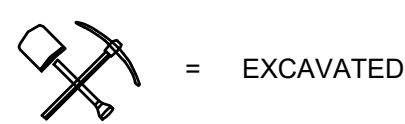
**SYMBOL 4: ESTIMATED KSAT\* (MOST LIMITING LAYER EXCLUDING SYMBOL 3H ABOVE).**

- a - HIGH
- b - MODERATE
- c - LOW
- d - NOT DETERMINED \*SEE "GUIDELINES FOR KSAT CLASS PLACEMENT" IN CHAPTER 3 OF THE SOIL SURVEY MANUAL, USDA

**SYMBOL 5: HYDROLOGIC SOIL GROUP\***

- (EXCLUDING MAN-MADE SURFACE IMPERVIOUS OR RESTRICTIVE LAYERS)
- a - GROUP A
- b - GROUP B
- c - GROUP C
- d - GROUP D
- e - NOT DETERMINED

**PLAN SYMBOL**



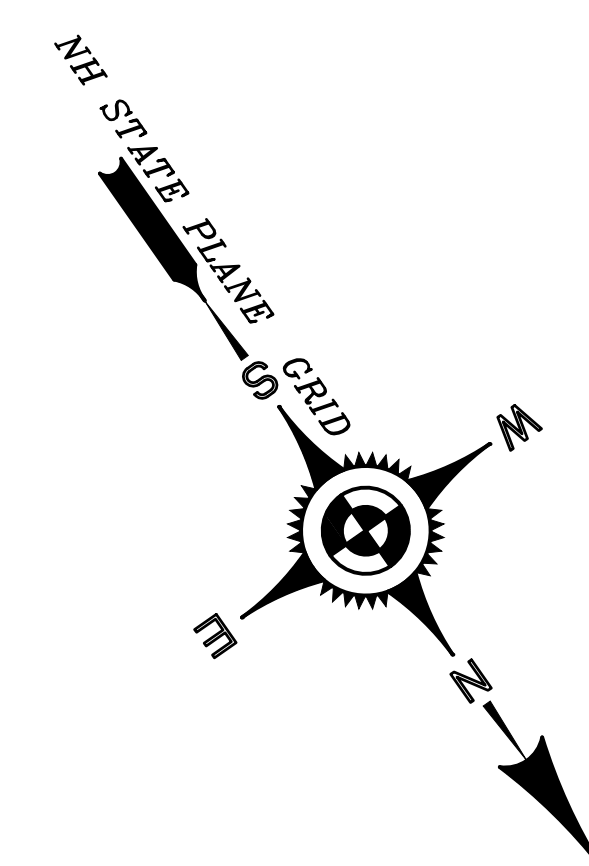
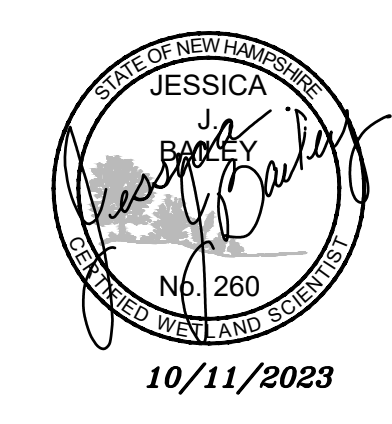
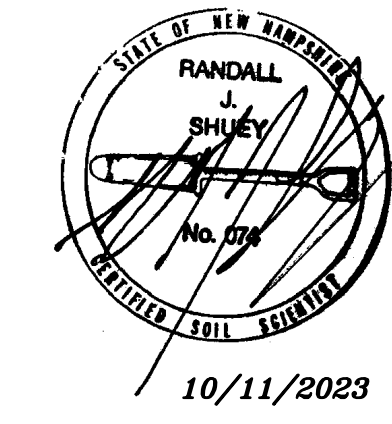
**WETLAND DELINEATION CERTIFICATION**  
 JURISDICTIONAL WETLANDS WERE DELINEATED BY JESSICA J. BAILEY, CWS #260 OF BAILEY ASSOCIATES, INC. 217 COTTON HILL ROAD GILFORD, NH 03249. DURING MAY 2023 USING THE FOLLOWING STANDARDS:

- ENVIRONMENTAL LABORATORY. (1987). "CORPS OF ENGINEERS WETLANDS DELINEATION MANUAL," TECHNICAL REPORT Y-87-1, U.S. ARMY ENGINEER WATERWAYS EXPERIMENT STATION, VICKSBURG, MISS.
- U.S. ARMY CORPS OF ENGINEERS. 2011. REGIONAL SUPPLEMENT TO THE CORPS OF ENGINEERS WETLAND DELINEATION MANUAL: NORTH CENTRAL & NORTHEAST REGION (VERSION 2.0), Ed. J.S. WAKELEY, R.W. LICHVAR, C.V. NOBLE, AND J.F. BERKOWITZ. ERDC/EL TR-12-1. VICKSBURG, MS: U.S. ARMY ENGINEER RESEARCH AND DEVELOPMENT CENTER.
- THE NATIONAL WETLAND PLANT LIST. COLD REGIONS RESEARCH & ENGINEERING LABORATORY. U.S. ARMY ENGINEER RESEARCH & DEVELOPMENT CENTER. TECHNICAL REPORT ERDC/CREL TR-12-11. OCTOBER 2012.
- NATIONAL WETLAND PLANT LIST, 2016, VERSION 3.3. LICHVAR, R.W., D.L. BANKS, W.N. KIRCHNER, AND N.C. MELVIN. U.S. ARMY CORPS OF ENGINEERS. PUBLISHED 28 APRIL 2016. ISSN 2153 733X.
- UNITED STATES DEPARTMENT OF AGRICULTURE, NATURAL RESOURCES CONSERVATION SERVICE. (2016). "FIELD INDICATORS OR HYDRIC SOILS IN THE UNITED STATES," VERSION 8.0. L.M. VASILAS, G.W. HURT, AND J.F. BERKOWITZ (EDS). USDA, NRCS, IN COOPERATION WITH THE NATIONAL TECHNICAL COMMITTEE FOR HYDRIC SOILS.
- NEW ENGLAND HYDRIC SOILS TECHNICAL COMMITTEE. (2017). VERSION 4, FIELD INDICATORS FOR IDENTIFYING HYDRIC SOILS IN NEW ENGLAND. NEW ENGLAND INTERSTATE WATER POLLUTION CONTROL COMMISSION, LOWELL, MA.
- CLASSIFICATION OF WETLANDS AND DEEPWATER HABITATS OF THE UNITED STATES, DECEMBER 1979. US DEPARTMENT OF THE INTERIOR, FISH AND WILDLIFE SERVICE. FWS/OBS-79/31.
- NEW HAMPSHIRE CODE OF ADMINISTRATIVE RULES ENV-WT 100-900. CURRENT EDITION.

**WETLANDS & DEEPWATER HABITATS CLASSIFICATION**

- PSS1/EM1F [PALUSTRINE, SCRUB-SHRUB, BROAD-LEAVED DECIDUOUS / EMERGENT, PERSISTENT, SEMIPERMANENTLY FLOODED]
- PSS1/EM1H [PALUSTRINE, SCRUB-SHRUB, BROAD-LEAVED DECIDUOUS / EMERGENT, PERSISTENT, PERMANENTLY FLOODED]
- PFO1/4E [PALUSTRINE, FORESTED, BROAD-LEAVED DECIDUOUS / NEEDLE-LEAVED EVERGREEN, SEASONALLY FLOODED OR SATURATED]

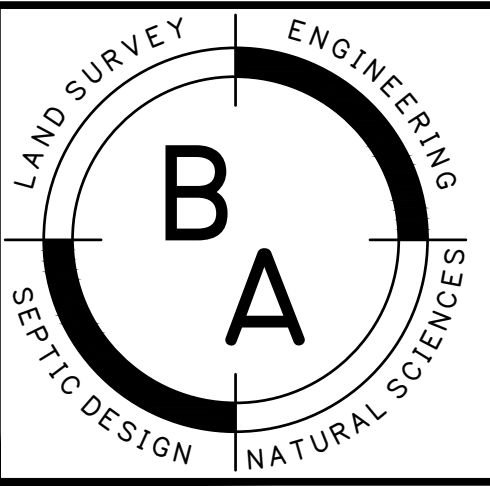
SITE-SPECIFIC SOIL MAPPING SURVEY CONDUCTED BY JESSICA J. BAILEY, CERTIFIED WETLAND SCIENTIST # 260 OF BAILEY ASSOCIATES, INC. UNDER THE DIRECTION AND PROFESSIONAL SUPERVISION OF RANDALL J. SHUEY, NH CERTIFIED SOIL SCIENTIST #74 OF NORTHPOINT ENGINEERING.



G:\3686 GALLANT\dwg\3686 SEPTIC-HSEZ.dwg, 10/11/2023 3:17:39 PM © BRYAN L. BAILEY ASSOCIATES, INC.

DATE	REVISION	INITIALS
DATE 09/19/2023	JOB No. 3686	
DRAWN BY ;JJB		
SCALE ; 1"=40'		

*"This map product is within the technical standards of the National Cooperative Soil Survey. It is a special purpose product, intended for [intended purpose of the Site-Specific soil survey]. It was produced by a professional Soil Scientist, and is not a product of the USDA Natural Resources Conservation Service. There is a report that accompanies this map."*



**BAILEY ASSOCIATES**  
 LAND SURVEYING & LAND PLANNING  
 ENGINEERING & NATURAL RESOURCE SCIENCES  
 WWW.BAILEY-ASSOCIATES.COM  
 (603) 528-3734  
 217 COTTON HILL RD. GILFORD, NH 03249

**TAX MAP 111 LOT 2**  
**SITE-SPECIFIC SOIL MAP**  
 LAND OF MICHAEL P. GALLANT  
 LAND LOCATED AT 265 CRYSTAL LAKE ROAD  
 PROPERTY OWNER: MICHAEL P. GALLANT DEED: BK. 2334 PG. 333  
 259 CRYSTAL LAKE RD. GILMANTON I.W. NH 03837  
 DATE OF PLAN: SEPTEMBER 2023 SHEET 1 OF 1