

Town of Gilmanton

New Hampshire



DATA SOURCES

NH GRANIT Data
 Most of the data displayed here represents stock data sets obtained in 2002 from the NH GRANIT database as maintained by the Complex Systems Research Center (CSRC) at the University of New Hampshire (UNH). The New Hampshire Geographically Referenced Analysis and Information Transfer System (NH GRANIT) is a cooperative project to create, maintain, and make available a statewide geographic data base serving the information needs of state, regional, and local decision-makers. A collaborative between the University of New Hampshire and the NH Office of State Planning (OSP), the core GRANIT system is based on the UNH Institute for the Study of Earth, Cities, and Space in Durham. The GRANIT approach to a statewide GIS depends upon the cooperative efforts of a host of agencies, collaborating on various elements of database design and construction as well as application development.

NH GRANIT and CSRC maintain a continuing program to identify and correct errors in these data. CSRC, OSP, SPNHS and the cooperating agencies and organizations make no claim as to the validity or reliability or to any implied uses of these data.

Other Data
 - Conservation Lands (2005): Includes stock GRANIT data as well as more recent parcels digitized by The Forest Society and Lake Region Planning Commission from various sources including aerial wet maps.
 - Roads derived from NH DOT main layer (2002) and USGS digital line graphs with assorted corrections and updates as identified by Town of Gilmanton and digitized by SPNHS.
 - Streams derived from stock GRANIT streams layer (1968) with assorted corrections and updates as identified by Town of Gilmanton.
 - Contours derived from USGS National Elevation Data DEM (19 meter cell size).

Map Disclaimer
 This map was produced for the Gilmanton Conservation Commission and is intended to be used for planning purposes only. Representations of property lines on this map are not interpretation of available data and should not be construed as binding or constitute evidence of ownership.



WATERSHEDS FULL EXTENTS



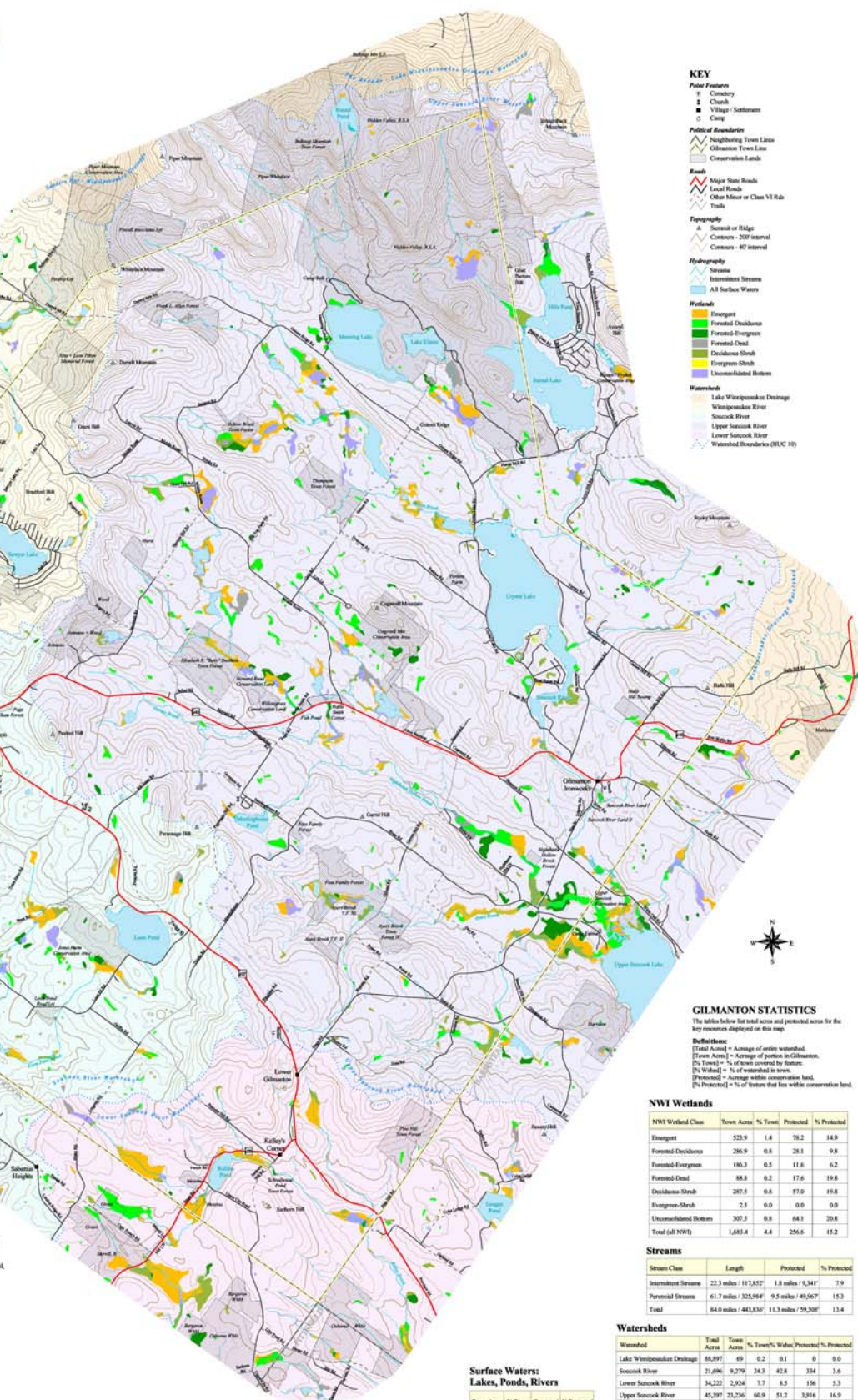
ACKNOWLEDGEMENT

This map is one of a series of maps produced as part of a comprehensive natural resource inventory for the Town of Gilmanton. The project was a joint effort of the Gilmanton Conservation Commission and The Society for the Protection of New Hampshire Forests with assistance provided by Blue Moon Environmental, Inc. and Gilmanton School. We are grateful for the expertise and time of those involved and hope that the natural resource inventory may serve as a valuable planning tool in support of smart growth and land conservation in Gilmanton.

Surface Water Features

Gilmanton Natural Resources Inventory

Map prepared by the Society for the Protection of NH Forests for the Gilmanton Conservation Commission with assistance from Blue Moon Environmental, Inc. and the Gilmanton School, February 2005.



KEY

Point Features
 * Cemetery
 □ Church
 ■ Village / Settlement
 ○ Camp

Political Boundaries
 --- Neighboring Town Lines
 --- Gilmanton Town Line
 --- Conservation Lands

Roads
 --- Major State Roads
 --- Local Roads
 --- Other Minor or Class VI Rd
 --- Trails

Topography
 ▲ Summit or Ridge
 --- Contour - 20ft interval
 --- Contour - 40ft interval

Hydrography
 --- Stream
 --- Intersected Stream
 --- All Surface Waters

Wetlands
 --- Emergent
 --- Forested-Decision
 --- Forested-Evergreen
 --- Forested-Dead
 --- Deciduous-Shrub
 --- Evergreen-Shrub
 --- Unconsolidated Bottom

Watersheds
 --- Lake Winnepesaukee Drainage
 --- Winnepesaukee River
 --- Suncook River
 --- Upper Suncook River
 --- Lower Suncook River
 --- Watershed Boundaries (RUC 10)



GILMANTON STATISTICS

This table lists the total acres and protected acres for the key resources displayed on this map.

Definitions:
 [Total Acres] = Average of water watershed.
 [Town Acres] = Average of portion in Gilmanton.
 [% Forest] = % of town covered by forest.
 [% Wetland] = % of watershed in town.
 [Protected] = Average within conservation land.
 [% Protected] = % of forest that has within conservation land.

NWI Wetlands

NWI Wetland Class	Town Acres	% Town	Protected	% Protected
Emergent	523.9	1.4	78.2	14.9
Forested-Decision	286.9	0.8	28.1	9.8
Forested-Evergreen	186.3	0.5	11.8	6.2
Forested-Dead	88.8	0.2	17.6	19.8
Deciduous-Shrub	287.5	0.8	37.0	15.8
Evergreen-Shrub	2.5	0.0	0.0	0.0
Unconsolidated Bottom	307.5	0.8	84.1	29.8
Total (all NWI)	1,683.4	4.4	256.8	15.3

Streams

Stream Class	Length	Protected	% Protected
Intermittent Streams	22.3 miles / 117,852'	1.8 miles / 9,341'	7.8
Perennial Streams	61.7 miles / 325,964'	9.5 miles / 49,967'	15.3
Total	84.0 miles / 443,816'	11.3 miles / 59,308'	13.4

Watersheds

Watershed	Total Acres	Town Acres	% Town	% Wetland	Protected	% Protected
Lake Winnepesaukee Drainage	88,897	69	0.2	0.1	0	0.0
Suncook River	23,096	9,279	24.3	42.8	334	3.6
Lower Suncook River	34,222	2,924	7.3	8.5	196	5.3
Upper Suncook River	45,297	23,236	40.9	51.2	3,916	16.9
Winnepesaukee River	16,582	2,620	6.9	14.1	391	14.9
Total	208,796	38,128	18.0	18.3	4,797	12.6

Note: All values in these tables are GIS calculated and are approximate. Gilmanton area is calculated as the 10,028 acres.

Surface Waters: Lakes, Ponds, Rivers

Town Acres	% Town	Protected	% Protected
1,385.1	5.6	32.4	2.3

Scale: 1:24,000

